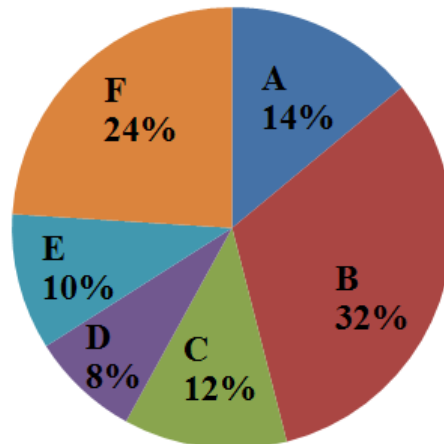


## Data Interpretation (IBPS PO MAINS)

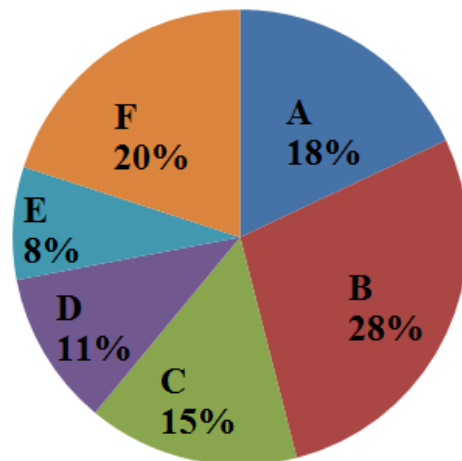
**Direction (1-5) Refer to the Pie-charts and answer the given questions.**

Number of Intex laptops sold = 28000

Percentage of Intex Smartphones sold



Total number of Smartphones (Intex and Lneovo) sold = 48000



1. The number of smart phones of both types sold by stores A and C is more than that sold by sold by stores E and F by

- A. 2500      B. 2600      c. 2000      D. 2400      E. None of these

2. What is the ratio between the number of Intex and Lenovo martphones sold by store A?

- A. 49 : 59      B. 47 : 49      C. 49 : 53      D. 49 : 47      E. None o f these

3. What is the respective ratio between the average number of Intex Smartphones sold by stores A, C and E and that sold by stores B, D and F?

- A. 3 : 4      B. 4 : 9      C. 9 : 16      D. 5 : 12      E. None of these

4. By what percent is the number of Lenova smartphones sold by store B is more than that of Intex Smartphones sold by store E?

- A. 40%      B. 60%      C. 55%      D. 45%      E. None of these

## Data Interpretation (IBPS PO MAINS)

5. What will be the central angle corresponding to number of smartphones both kinds sold by stores C and F?

- A.  $126^\circ$       B.  $115^\circ$       C.  $90^\circ$       D.  $80^\circ$       E.  $120^\circ$

**ANSWERKEY**

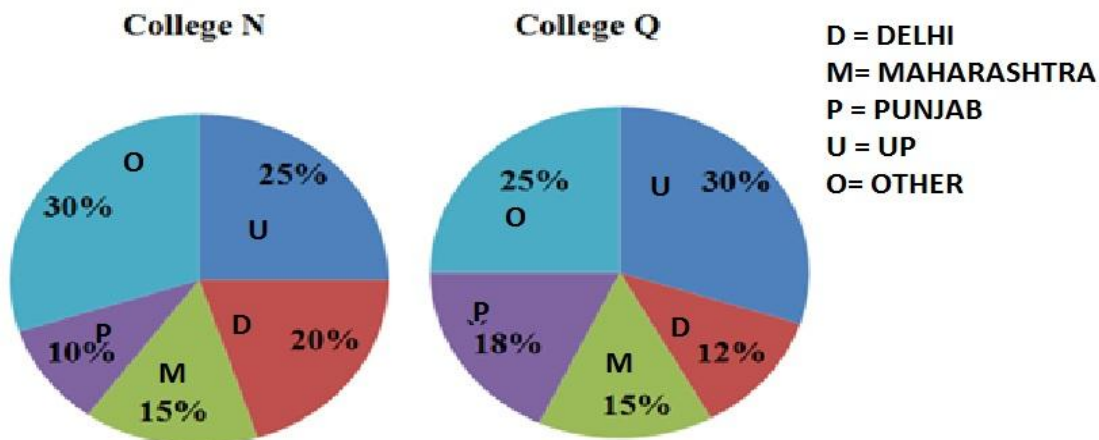
1--D, 2--A, 3-C, 4--B, 5--A

**Direction (6-10) Study the following table and Pie-Chart carefully and answer the following questions given below.**

**Number of students studying in different streams in six engineering colleges**

College	Computer Science	Electrical Engineering	Electronics	Civil	Mechanical	Others
M	250	320	160	272	128	150
N	120	210	200	150	180	220
O	220	150	220	160	200	120
P	180	170	140	128	100	172
Q	240	220	180	170	190	200
R	160	200	150	190	150	160

**Pie-charts show the distribution of students in different states in colleges N and Q.**



6. How many students doing in civil engineering in College N, were from UP?

- A. 35      B. 60      C. 55      D. Can not be determined

7. What is the difference between the number of students from Delhi in colleges N and Q?

## Data Interpretation (IBPS PO MAINS)

A. 34                      B. 50                      C. 60                      D. 72

8. What is the difference between the number of students pursuing computer science and those pursuing mechanical engineering in the given six colleges?

A. 205                      B. 224                      C. 222                      D. 220 Answer & Explanation

9.. By what percentage is the number of students from Punjab in college N more/less than those from Maharashtra in college Q?

A. 50%                      B. 40%                      C. 20%                      D. 30%

10. The total number of students in college R forms approximately what percentage of the total number of students in colleges M, N and P together?

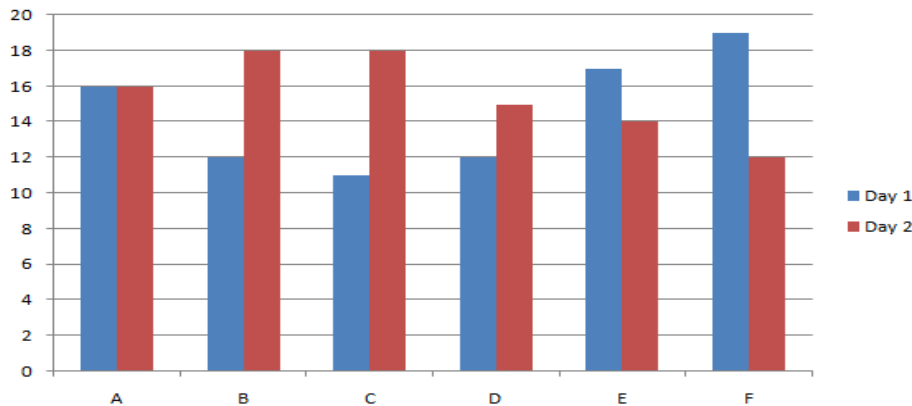
A. 25%                      B. 33%                      C. 31%                      D. 35%

### ANSWERKEY

**6--D, 7--D, 8-C, 9--B, 10--C**

**Direction (11-15) Study the following bar graph and table carefully and answer the following questions given below.**

**Time taken to travel (in hours) by six vehicles on two different days.**



**Distance covered by six vehicles on each day**

Vehicle	Day 1	Day 2
A	832	864
B	516	774
C	693	810
D	552	765
E	935	546
F	703	636

**11. Which of the following vehicles travelled at the same speed on both the days?**

A. Vehicle A    B. Vehicle B    C. Vehicle C    D. Vehicle D

## Data Interpretation (IBPS PO MAINS)

12. What was the difference between the speed of vehicle A on day 1 and the speed of the vehicle on the same day?

- A. 22 kmph    B. 11 kmph    C. 10 kmph    D. 13 kmph

13 What was the speed (in m/s) of vehicle C on day 2?

- A. 12.5 m/s    B. 11.5 m/s    C. 10.5 m/s    D. 9.5 m/s

14. The distance travelled by vehicle F on day 2 was approximately what % of the distance travelled by it on day 1?

- A. 90%    B. 95%    C. 94%    D. 98%

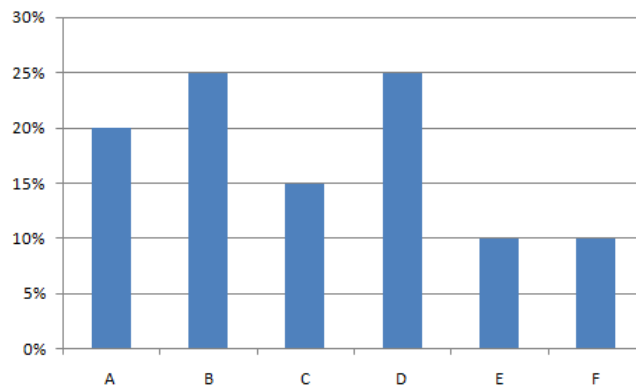
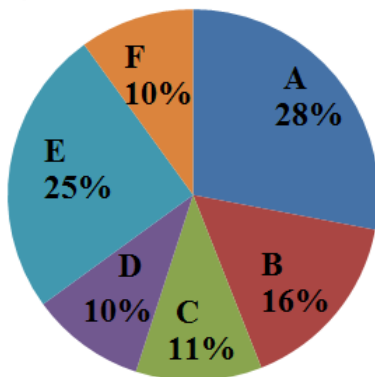
15 What is the ratio of speeds of vehicle D and Vehicle E on day 2?

- A. 14:15    B. 17:13    C. 15:16    D. 13:17

### ANSWERKEY

11--B, 12--B, 13-A, 14--A, 15--B

**Direction (16-20)** The following Pie chart shows the percentage number of the candidates passed in examination from States A, B, C, D, E, F of a country in 2006. The Bar graph shows the percentage of fresh candidates who passed their graduation in 2006.



16. If in 2006, the total passed candidates from states A, B, C, D, E and F was 650, then percentage of non-fresher candidates from State A who passed the examination in 2006 is

- A. 95%    B. 86%    C. 80%    D. 70%

## Data Interpretation (IBPS PO MAINS)

17. If in 2006, the total number of freshers from state D was 160, then how many non-fresher candidates passed the exam from State E?

- A. 1430      B. 1240      C. 1420      D. 1440

18. If total passed candidates from state B in 2006 was 112. what is the ratio between the number of freshers from state A and that of non-freshers from state C?

- A. 39:65      B. 38:65      C. 43:65      D. 41:65

19. If there is an increase of 10% and 20% candidates from state A and state B in the year 2007 respectively and the number of total passed candidates from state C in 2006 was 77, what would be the approximate total no of passed candidates from state A and State B in 2007?

- A. 400      B. 350      C. 450      D. 380

20. If the non-fresher candidates from state B in 2006 were 60, how many candidates passed the exam from all the states?

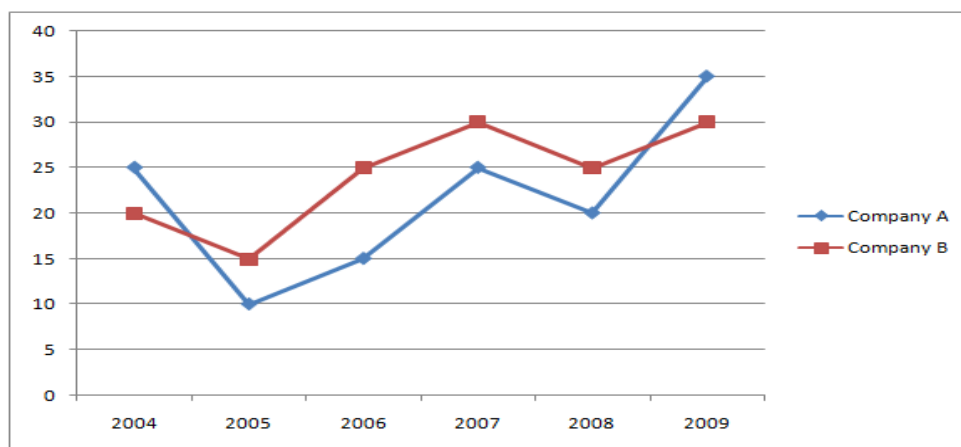
- A. 600      B. 400      C. 500      D. 350

### ANSWERKEY

16--C, 17--D, 18-A, 19--B, 20--C

**Direction (21-25) Refer to the line graph and answer the given questions**

**Percentage rise in profit of two companies over the years**



21. If the profit earned by company A in the year 2005 was Rs.1.50 lakh, what was the profit earned by the company A in the year 2006?

- A. 185000      B. 172500      C. 165500      D. 182500

## Data Interpretation (IBPS PO MAINS)

---

22. If the profit earned by company B in the year 2007 was Rs.2 lakh, what was the profit earned by the company B in the year 2008?

- A. 285000      B. 272500      C. 250000      D. 282500

23. If the profit earned by company A in the year 2006 was Rs.1.84 lakh, what was the amount of profit earned by the company B in the year 2006?

- A. Rs. 2.14 lakh      B. Rs. 2.44 lakh      C. Rs. 2.32 lakh      D. cannot be determined

24. What is the percentage increase in percentage rise in profit of company B in the year 2007 from the previous year?

- A. 20%      B. 5%      C. 10%      D. 15%

25. What is the average percentage rise in profit of company B over all the years together?

- A. 125/6 %      B. 135/6 %      C. 145/6 %      D. 155/6 %

### ANSWERKEY

21--B, 22--C, 23-D, 24--A, 25--C